

SAFE SHELTER

What is the Safe Shelter?

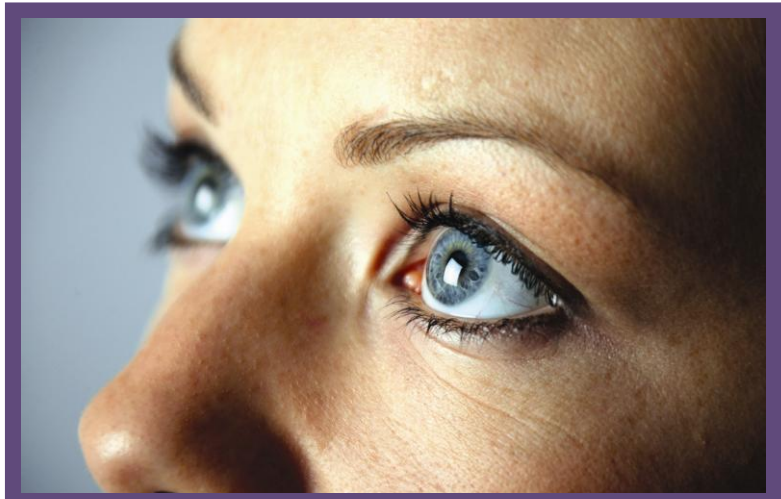
- A safe, violence free environment for women and survivors of intimate partner (i.e. romantic relationship) domestic violence and their dependent children.
- All services are free of charge.
- Services are available to survivors who are seeking shelter as well as those women who are in need of outreach services.

What Services are Offered?

- 24/7 crisis hotline with staff available 24 hours a day to provide a listening ear.
- Short-term housing for women who are survivors of intimate partner domestic violence and their dependent children.
- Clients' daily needs for food, clothing and hygiene items are provided.
- Domestic violence support groups and individual counseling.
- Legal advocacy to help clients file personal protection orders; accompany them in court; and, aid in the navigation of the criminal justice system.
- Survivors are assisted in setting goals for themselves and guided in the process of meeting these goals. Information and referrals to other organizations for assistance are provided.
- Advocacy is available on behalf of clients to ensure they are receiving all necessary services in the community.

What Does Safe Shelter Do?

- Success is measured by discharge surveys and safety plans developed by survivors in conjunction with staff.
- Collaboration with community, government and law enforcement agencies is critical to our success.
- We save lives.



What Is The Cost and Who Stays at the Safe Shelter?

All services are free of charge.

Our primary goal is to provide a safe environment for survivors to feel empowered to make decisions.

Supportive services are available to assist with information and referral to local agencies regarding housing options, basic needs, etc.

Counseling services are available either on an individual basis or through attendance at a support group. Support groups are held weekly in Niles, Berrien Springs and Benton Harbor.

We gratefully acknowledge funding from VOCA (Victims of Crime Assistance), MDVPTB (Michigan Domestic Violence Prevention Treatment Board) and MSHDA (Michigan Department of Human Services).

P.O. Box 8789, Benton Harbor, MI 49023
269-925-9500 or Fax: 269-927-1433

www.cfsswmi.org